



GREENLEAVES MONTESSORI  
*International School*

# Greenleaves Montessori American School

"Help me to think for myself"



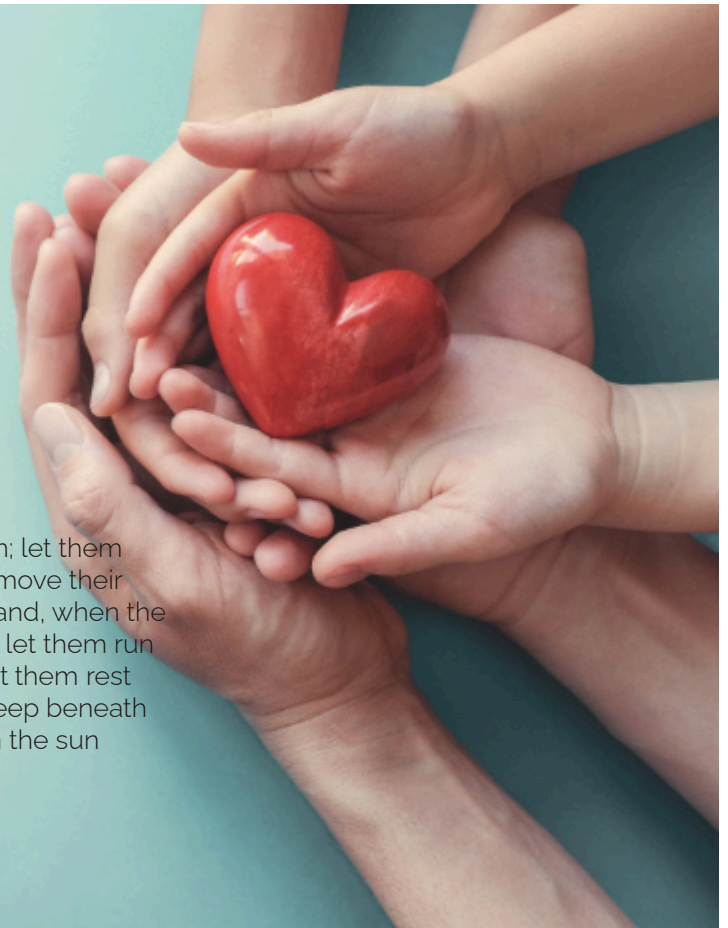


GREENLEAVES MONTESSORI  
*International School*



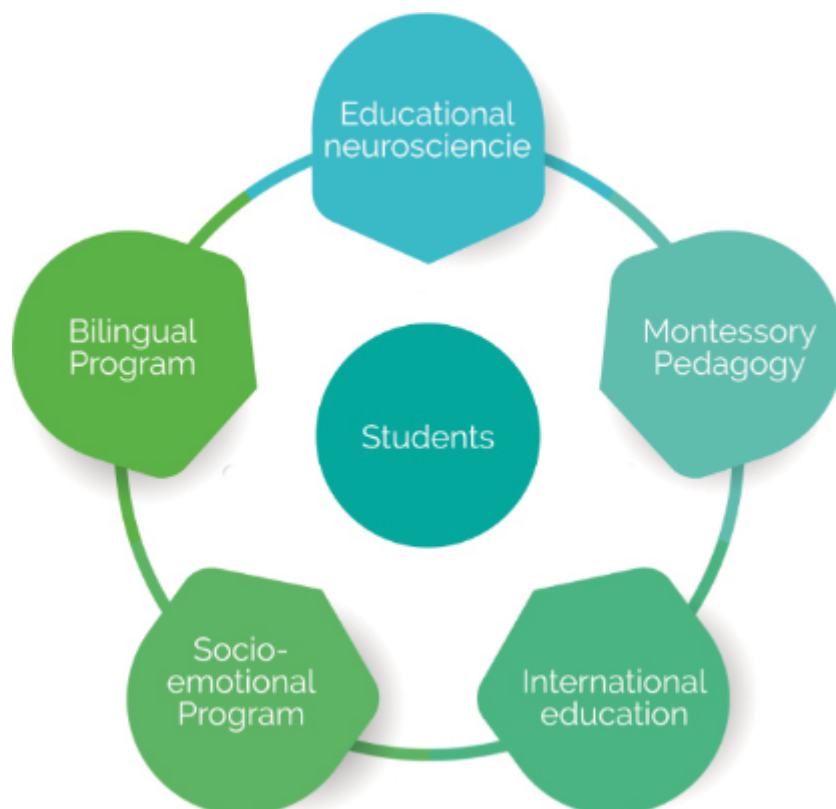
"Let the children be free; encourage them; let them run outside when it is raining; let them remove their shoes when they find a puddle of water; and, when the grass of the meadows is damp with dew, let them run on it and trample it with their bare feet; let them rest peacefully when a tree invites them to sleep beneath its shade; let them shout and laugh when the sun wakes them in the morning"

Maria Montessori

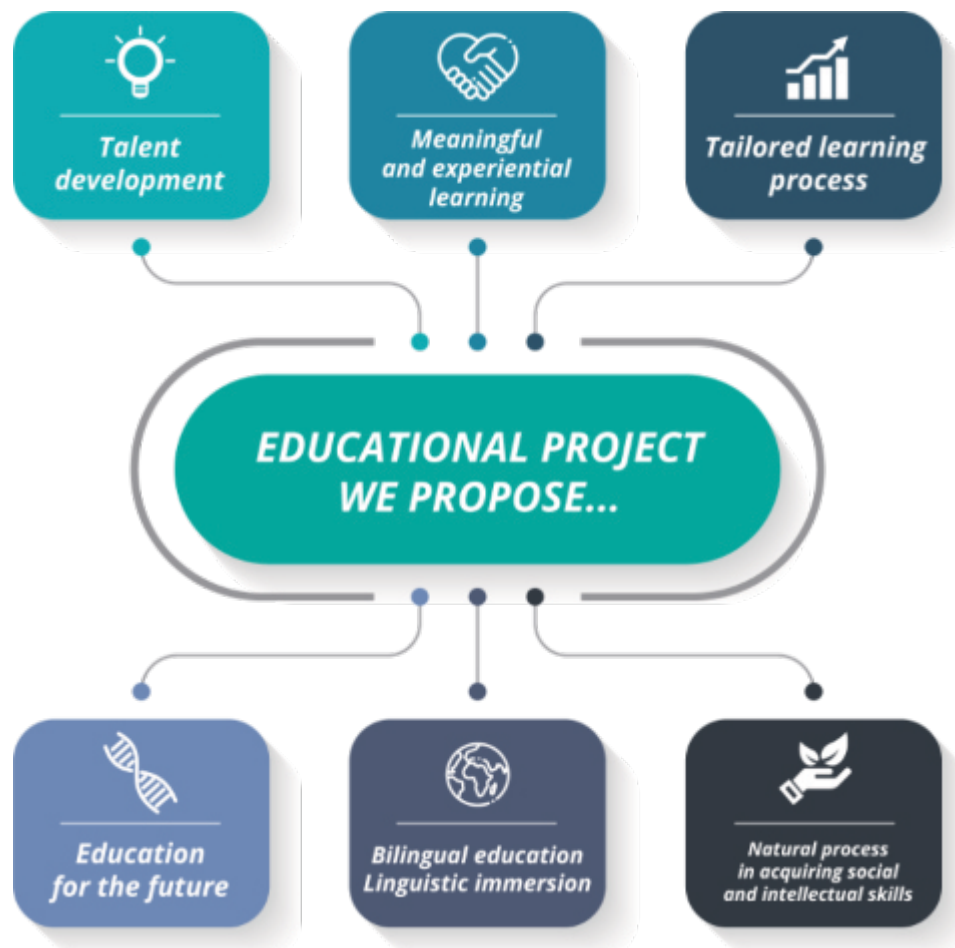


At GREENLEAVES MONTESSORI, our students are the center of learning.

From this perspective, our project focuses on the following aspects:









## Educational project

How to achieve it

## Educational neuroscience

---

Each learning process is unique and individual...

Therefore, we have created our own educational project based on cerebral integration, through two clearly differentiated programs:

- Work program (executive functions)
- Creative program (soft skills).

## Montessori pedagogy

---

It is characterized by offering a prepared environment: orderly, esthetic, simple and real... where each element has a reason in the development of children.

They are based on the integral development of students to maximize their physical, emotional and intellectual capacity.

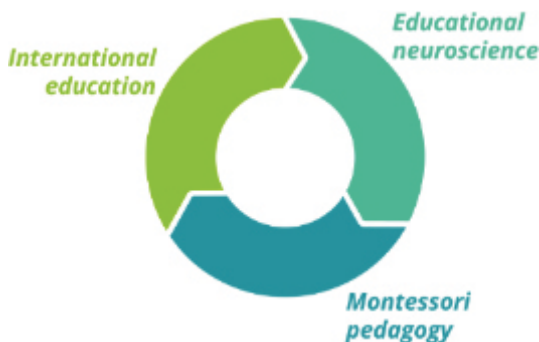
Promote freedom of movement, free interaction within the classroom.

They work by transdisciplinary learning areas, adapted to the student, in an environment that stimulates creativity, manipulation and research through tangible and real didactic material.

They do not implement a reward system; on the contrary, they promote teamwork and collaboration.

Students learn from their own mistakes as part of the process to success and autonomy.

Educate for peace and development of the child as an active member of society.



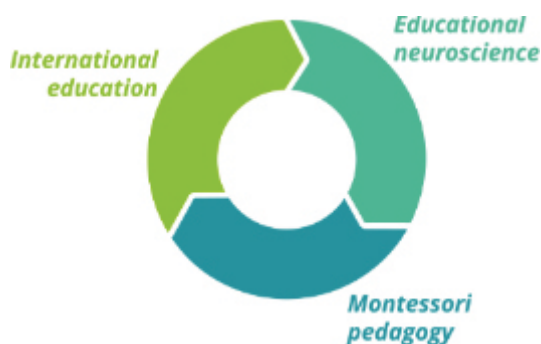




## Educational project

How to achieve it

## Educational neuroscience



### The attributes we work and we look for are:



Our goal as an international school is to offer quality bilingual teaching without the need to study the foreign country.

To do this we are governed by the standards of the [IB program \(International Baccalaureate\)](#) offering four demanding and high quality international education programs for students from 3 to 19 years old.

These [programs](#) promote the personal and academic development of students and encourage them to think critically and transdisciplinarily, fostering diversity, curiosity and eagerness to learn, in the integral development of the child and their ability to research.

By actively participating in an [evaluation and continuing](#), students begin a regular learning effectively and be able to act on constructive feedback.





## Students

How to achieve it

Our goal is...



We are committed to an individualized, quality education, outside the traditional standards of the current educational system.

Children at our school acquire at least the “same final product” as in a traditional center but are fully prepared and for everything necessary in their lifelong adventure, as they are used to freely exercising their own judgment and will, guided by their imagination and their enthusiasm to learn.

Only children like these are able to fully exercise their tasks as citizens of a civilized community.







## The prepared environment At GreenleavesMontessori

Our spaces are called  
“prepared environment”



Tidy, beautiful  
and bright spaces



Espaces  
prepared for multilevel work



Espaces where self-learning  
and growth are encouraged



Direct contact with  
the natural environment

At Greenleaves Montessori, we give major importance to designing and organizing environments.

A large part of our work is centered especially on observing and knowing the present needs that evolve in each child, so as to create a space for optimal, significant work.

Our spaces are called “prepared environments” because they are specially designed by and for children’s enjoyment.

They are carefully organized to foster their self-learning and growth.

They are expansive, well-lit spaces with natural light to promote movement, concentration and tranquility, where what prevails is the cleanliness and order that directly influence the organization of a child’s mind.

But it is not only these spaces that nurture the teaching-learning process of our students, the contact with NATURE offers the possibility of developing a rich and broad vision of our project.

For this reason, our spaces will always be immersed in a natural environment where they can complete their educational skills in an experiential way..



GREENLEAVES MONTESSORI  
*International School*



## Family friendly Families support

At Greenleaves we offer

We believe that cooperation and coordination of school and family are fundamental to encourage children's new learning and integral development.

-  Transparency
-  Cooperation
-  Communication
-  Parents' school
-  Family events







## Social-emotional Program

“ I Take Care, You Take Care ”

---

Through multiple methodologies such as conscious discipline, emotional self-regulation and cooperative learning, we are able to create an environment of safety and connection that helps our students develop into future adults in a safe, inclusive, compassionate and social environment.

Through this holistic approach, we empower our students to make optimal and safe decisions, placing importance on the interrelationships between our students of different ages, creating a safe and conflict-free climate based on a supportive school community.





## Diet Natural and nutritious dining area

## Natural and nutritious dining area

---

Greenleaves Montessori works with Nattive where healthy and nutritious plates are made.

Natural and organic food, seasonal and local products are used, nutritionally balanced and adapted by growth stages.

Through a respectful cuisine with producers, raw materials and nature, and always from the nutritional balance, dishes with all the flavor and the greatest contribution of macro and micronutrients result.

We are fully convinced that the best way to feed ourselves is to recover natural and non-aggressive processes.







# GREENLEAVES MONTESSORI

## *American School*

### Admission procedure

#### Choose a school



### Our application procedure

Choosing a school is a very personal decision that requires careful consideration.

If families are considering the possibility that their children attend our school, we would like them to have a full understanding of the Montessori method and the educational project we carry out.

For this reason, we ask that they follow each of the steps in our application procedure.



"To the young child we give guides to the world and possibility to explore it through his own free activity; to the older child we must give not the world, but the cosmos and a clear vision of how the cosmic energies act in the creation and maintenance of our globe"